



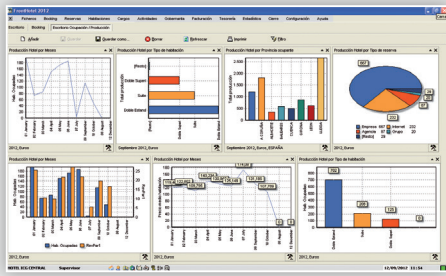
The solution that guarantees total control  
of all the departments of your company

Central-store communications, Sales, Purchases and Warehouse,  
CRM, Finance, Accounting, Analytical Statistics...

[www.icg.eu](http://www.icg.eu)

# ICGMANAGER

Complete management software without limits, powerful and with extensive functionalities



ICGManager Desk-Screen

4 versions to adapt to your company

BASIC  
PYME  
ADVANCED  
CRM

SQLServer 2005/2008 database	✓	✓	✓	✓
Multiuser		✓	✓	
Multi-company management		✓	✓	
Multi-company accounting		✓	✓	✓
Communication with FrontRest	3*	3*	✓	
Communication with FrontRetail	3*	3*	✓	
Communication with FrontHotel			✓	
B2B Relation			✓	
International Management			✓	
Price rate management	✓	✓	✓	✓
Mix&Match - Offers and promotions		✓	✓	
Customer loyalty cards		✓	✓	
Creation of free client fields	✓	✓	✓	✓
Creation of free item fields	✓	✓	✓	✓
Quotations		✓	✓	✓
Sale orders and delivery notes		✓	✓	✓
Automatic Invoicing of Sales		✓	✓	✓
Purchase forecast	✓	✓	✓	✓
Purchase orders, delivery notes and invoices	✓	✓	✓	✓
Inventories	✓	✓	✓	✓
Inventory analysis		✓	✓	
Warehouse transfers	✓	✓	✓	✓
Multi-warehouse stock balancing			✓	
Stock balancing between warehouses			✓	
Replacement of sales			✓	✓
Replacement of minima			✓	✓
Manufacturing orders			✓	✓
Treasury (Collections, Payments)	✓	✓	✓	✓
Remittances		✓	✓	✓
Accounting		✓	✓	✓
Documentary Traceability		✓	✓	✓
Lots and serial numbers	✓	✓	✓	✓
Analytical statistics and cubes	✓	✓	✓	✓
Daily invoicing		✓	✓	
Periodic invoicing		✓	✓	✓
Turnover of loans			✓	
Serve orders	✓	✓	✓	✓
Activities and services		✓	✓	

\* Maximum 3 Fronts

## The most complete business management software

Manage, command and control your business with the most reliable and safe way with our software **ICGManager**.

With ICGManager you can command the information of all the areas of your business to speed up tasks, to get better the invoicing and financial processes, and reduce costs. The application complements the management of the warehouse and inventories, and the management of autosale-presale based on hand terminals.

Take profit of this potent platform of informs and graphics for the instantly decision making. ICGManager incorporates a platform totally configurable for the planning, tracing and scheduling of all the activities of his company related to the clients. Facilitates the work on the call register, visits and agreements and guarantees a good and more efficient planning and scheduling of the sales team.

With ICGManager you obtain the organized tracing of marketing campaigns and the implantation of quality normative, project management and control of immobilized.

## Sales

### Quotations

Creation of quotations by entry and tracing of revisions.

### Documental traceability

Tracing of all documents associated to the sales cycle: quotation, order, delivery note, invoice, payment and accounting.

### Sale rates

Assistant for the creation and maintenance of prices, offers by periods and promotions. Special conditions by client.

### Sales force control

Follow-up of sales by vendor, definition and calculation of commissions.

### Invoicing

Automation of the invoicing of delivery notes and invoicing of periodic amounts processes.

### AutoVenta for PDA

All commercial functions available from a PDA: routes, offers and promotions, pending payments, stock queries, indirect invoicing and wireless printing are some of its features.



### ICGCommerce:

Management of sales by Internet:

Your business open during 24 hours, 365 days.



### Electronic invoice:

Creation of electronic invoices through the generation of the officially approved facturæe 3.2 XML file.

## Purchases and Warehouse

### Procurement

Manual entry of purchase orders or automated orders based on the stock levels and delivery terms.

### Reception

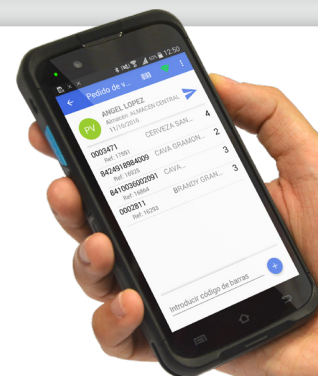
Validation of the received items against the orders, labelling and warehouse location.

### Inventories

Planning, realization and analysis of total inventories, partial or by zones.

### Expedition

Preparation and validation of delivery notes. Printing shipment labels.



### StockManager

All warehouse operations can be done in real time on a Android PDA.

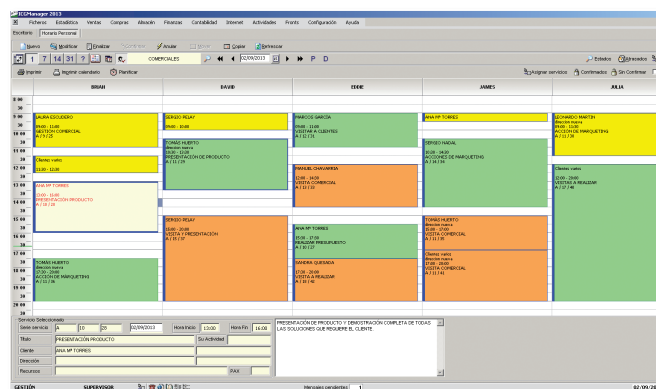


# A solution that guarantees the total control of all the departments of a company and strengthens the relation with the clients

## CRM

Tool that strengthens the personalized relation with clients and contacts of the company.

- Access from a single screen to the personal data of customers, suppliers, contact persons, employees and public administrations.
- Registration of calls, visits and agreements.
- Customization of the customers' and contacts' data through the creation of new fields to register and update the necessary information.
- Access documents, pending collections, activities and services directly from the customer file.
- Planning and scheduling of the sales team.
- Management of technical services and registration of Call Center tickets.



Management of services and activities

## Finances

- Definition of credit limits by customer and allocation of attributions by user.
- Follow-up and control of collections and pending payments.
- Generation in file and by Internet of bank remittances as norms SEPA.
- Impression of cheques, promissory notes and letters of payment.
- Bank Consolidation.



## Accounting

- Complete real-time integration with invoicing and finances.
- Navigation by extracts and documents.
- Tax Liquidations.
- Cost center analysis.
- Official balances.



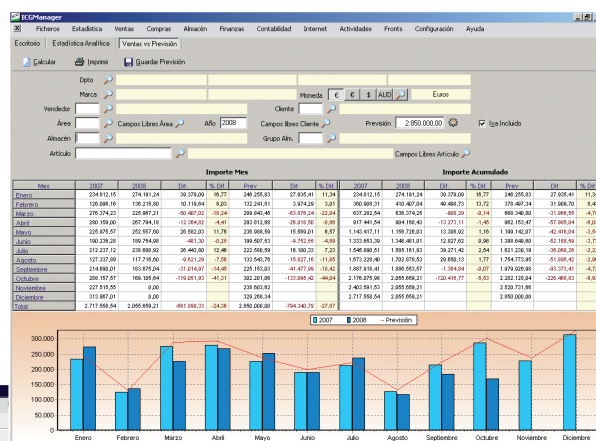
## Analytical Statistics

The business information for instant decision making

**ICGManager** incorporates a powerful engine for the generation of personalized reports and graphic, allowing the user to take profit of all the information of his company in the most comfortable and immediate way.

- Sales ranking by item, customer, business area, department, brand...
- Sales and purchase comparison over several periods (monthly accumulated, monthly accumulated of last year, yearly accumulated, yearly accumulated of last year, month to month, daily, by weekday, etc.).
- Sales by time range, weekday...
- Dynamic cubes and different graphs: bars, columns...
- Items without rotation, above maximum stock level, below minimum stock level and stock breakage.
- Current inventories, inventories on a date, warehouse transfers...
- Collections and pending payments, Cashflow.

The reports, cubes and graphs can be printed, exported to Excel or sent by e-mail.



Sales vs Forecasts



Dynamic Cubes

## A man in a blue shirt is working at a desk. He is looking down at a document, holding a pen in his right hand. On the desk, there is a computer keyboard, a mouse, and several documents. One document has a colorful bar chart. The man is wearing a blue long-sleeved shirt and a white tie. The background is slightly blurred, showing more papers and office equipment.

ICGMANAGEMENT

A global solution with  
as all established

- **Sales in real time.** Collects the sales of all establishments at the second.
- **Creation of articles for all the establishments.** Create items only once, as ICGManager will send them over the internet to all establishments.
- **Centralized price changes.** It is not necessary to visit each establishment to change the price of the products.
- **Centralized purchasing** for all establishments.
- **Centralized administration** and user profiles.
- **Control POS and accounting.**
- **Customized reports and business analysis.** To take real time decisions.
- **Immediate set-up** of an establishment from the own central, without having to travel on-site.
- **Centralized stocks:** Possibility to consult the stock of other outlets.
- **Customer loyalty:** Using prepaid cards, VIP cards and points.
- **Offers and promotions:** (3x2, the second at half price...).
- **Security copies:** Easy substitution of a POS without data loss

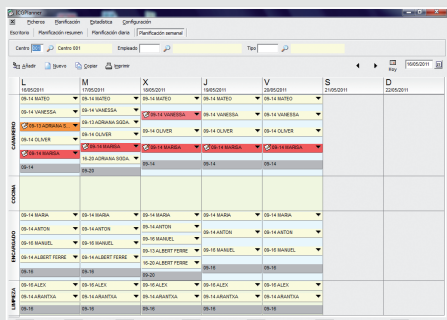
[illegible]

*Closing sheet of a chain of establishments*

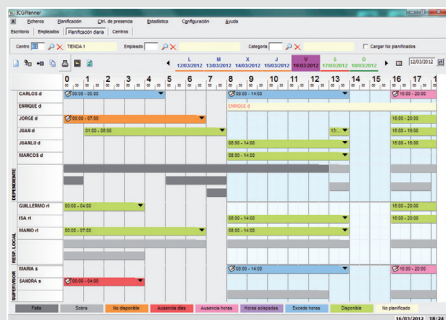
**Software for the management of personnel:  
schedule planning, absence control...**

Plan the schedules, shifts and workdays having in consideration the availability of the personnel (vacations, personal days, low medical...).

Compare the planning with the presence control of the employees.



### Weekly Planning



### Daily Planning

**All information about your  
business in real time**

You can compile, analyse and transform the information necessary for decisions making in real time. Differently to other BI systems, ICGAnalytics offers information in the same time as data is generated, without previous import or need to process it in ERP.



Incorporates a module for sending mass mails and SMS to increment promotions, boost marketing campaigns strengthen commercial actions, allowing custom actions on segmented customers.

- Send SMS messages to customers, suppliers, sellers or contacts anywhere in the world.
- Customer segmentation, with or without sales.
- Automation of mass e-mail and SMS.
- Informs the customer of the points he has through SMS. The client only has to go to the establishment and show it to benefit from the promotion, discount...



## Technology and Experience since 1985

**Certified Company:**



Distributed by: